

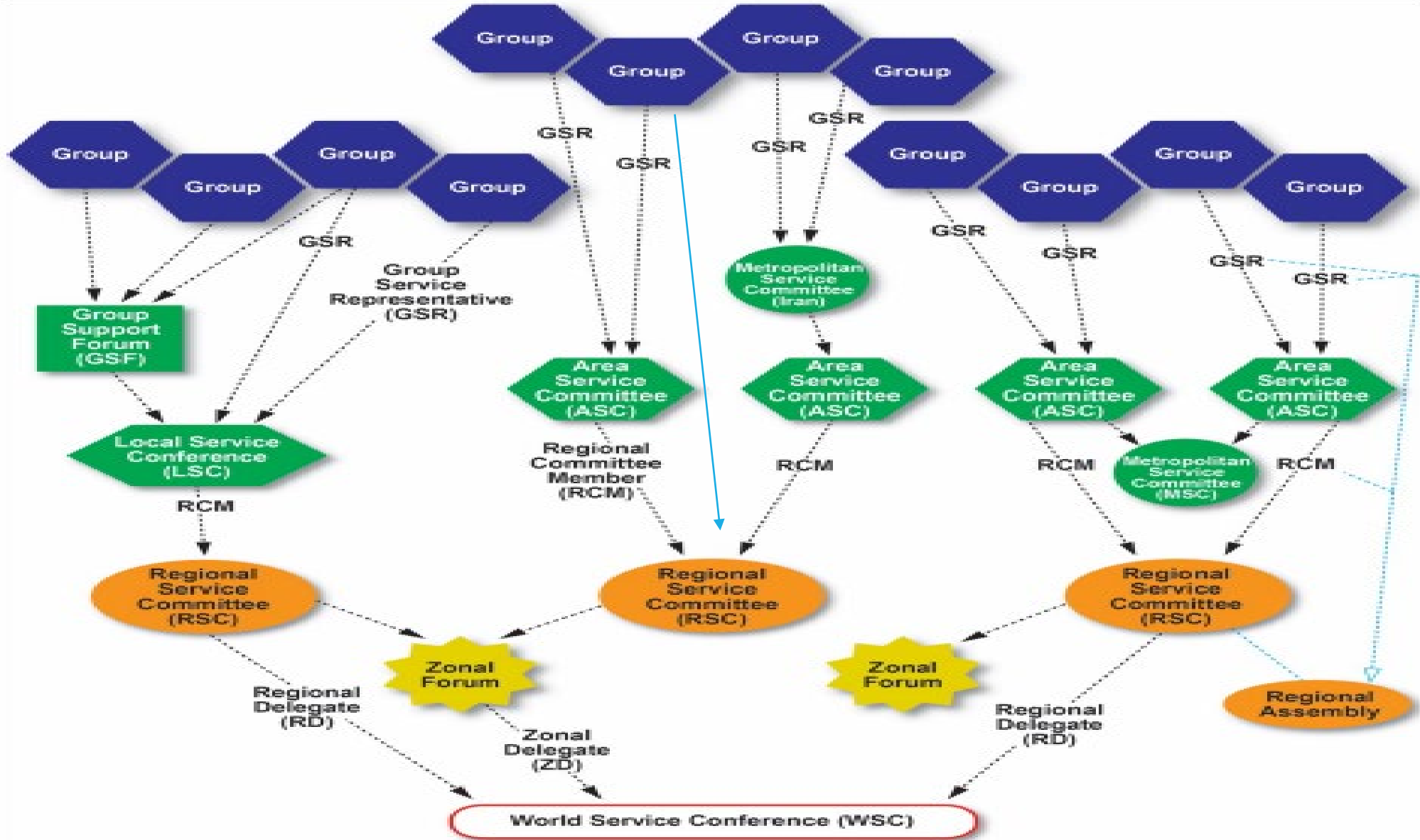


# **USEFUL INFORMATION FOR DELEGATES**

The new comer is the most important person at any meeting, even an EDM meeting!

# NA Service Structure

with possible options that can be combined



# ACRONYMS

**NAWS** – Narcotics Anonymous World Services

**WB** – World Board

**WSO** – World Service Office

**ESO** – European Service Office

**WSC** – World Service Conference

**GWSNA** – Guide to World Services in NA

**CAR** – Conference Agenda Report

**CAT** – Conference Approval Track

**EDM OP** – EDM Orientation Pack

**FIPT** – Fellowship Intellectual Property Trust

# SERVICE BODY FUNCTIONS

**NAWS** – World services are those services that deal with the problems and needs of NA as a whole and that NA offers to its members, its groups, and to society. The basic purposes of our world services are communication, coordination, information, and guidance.

**WB** –The Board serves as a primary resource for the NA Fellowship by providing the support needed to carry our message while ensuring that the service and support provided are of the highest quality possible. The World Board manages all activities of World Services including oversight of the operations of the Fellowship's primary service center, the World Service Office.

**WSO** – Carries out the directives of WSC in matters relating to communications and information for NA, its services, groups, and members. The WSO achieves this purpose by maintaining correspondence with NA groups and service committees, by printing and distributing WSC-approved literature, and by maintaining the archives and files of NA.

**WSC** - Regional and zonal delegates, together with members of the World Board and the executive director of the World Service Office, meet to discuss questions of significance to the Fellowship of Narcotics Anonymous as a whole.

# SERVICE MATERIAL FUNCTIONS

**GWSNA** – Provides useful information about our service structure, service bodies, WSC, World Convention and much more. It is updated every 2 years in line with the WSC cycle. This is very useful for delegates!

**GLSNA** – Provides useful information about our service structure, particularly on a local level. This is good to use within groups, areas, regional meetings for reference!

**CAR** – Includes items for fellowship discussion and decision, including reports, proposals, and motions from the WB and any motions submitted from regions. The report contains the proposals and motions that the Fellowship is being asked to consider and form a fellowship-wide conscience on.

**CAT** – contains a variety of material to be considered at the upcoming WSC that was not included in the CAR. Items that typically are included in the CAT include the proposed NAWS Budget and project plans for the upcoming cycle, seating requests, and recommendations from the WB, as well as other service- or WSC-related material.

**EDM OP** – Provides information and history, and acts as our guidelines for EDM service.

**FIPT** - A set of documents describing how NA's literature and logos are managed and protected for the greatest benefit of the fellowship as a whole. Contains its own glossary of terms. Approved by the fellowship in April 1993.

# FREQUENTLY ASKED QUESTIONS

**Q. What is the difference between World Board and the World Service Office staff?**

A. The WB are a service committee elected by the fellowship via the WSC. WSO staff are paid special workers employed by Narcotics Anonymous World Services Inc, some staff are NA members are some are not NA members but they are all employees.

**Q. Why are some regions not voting participants (seated) at the world service conference?**

A. There is a seating process which requires NA Regions to apply to become a voting member of WSC. This process includes a set of criteria and questions for the region. The application is initially reviewed by the WB, who may then decide to put forwards to WSC as a Motion for decision.

**Q. What support can we (an EDM region) ask for from the EDM body?**

A. We can ask for anything or any question at the EDM. Specifically, your region can request support from:

- FD – with specific tasks, implementing NA service structure, developing new services, developing literature, etc
- PR – in carrying the message and maintaining relationships with professionals
- ZD – anything relating to the WSC, CAR and NA globally